

VMI AB

Torsgränd 15
603 63 Norrköping, Sweden
Tel. no: +46 11 31 16 67
Fax no: +46 11 31 16 78
E-mail: info@vmiab.com
www.vmiab.com

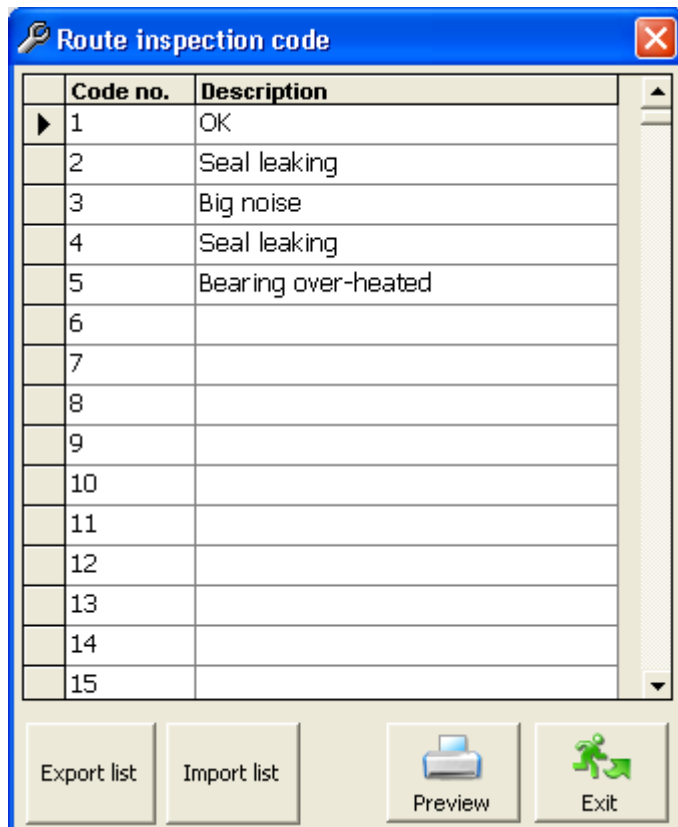
SpectraPro[©]
ServicePack 17 - Version 4.17.20



Release date: August 2011
Doc. Ref. No. AN 01469

1 Import/Export Inspection code list

New functionality added to the Inspection Code List:



Export list. The Inspection code can be exported into a text file, with the extension **.ics**.

Import file. The Inspection code can be imported from any previous exported file.

The Import file is a standard text file, having the first 2 lines in a fixed format. This line is used to identify any Inspection Code file.

See below a sample of an Inspection Code file.

```
[Header]
FileType = ICS
* SpectraPro - Inspection code list
Records = 64
[IC01]
String = OK
[IC02]
String = Seal leaking
[IC03]
String = Big noise
[IC04]
String = Seal leaking
```

The file can be manually changed, just opening the file with the NotePad.

Only the sentence following the "*String* =" must be changed.

Do not change the items between square brackets.

2 Manual Entry point

The regular visual inspection of equipments and machinery into a plant is a necessary part of any predictive maintenance program. In many cases, the visual inspection will detect potential problems that might be missed using other predictive maintenance techniques.

The routine visual inspection of all critical plant systems will augment the other techniques and ensure that potential problems are detected before serious damage can appear.

SpectraPro software includes the capability of recording visual observations as part of the routine data acquisition process. Because the incremental costs of these visual observations are insignificant, this technique should be incorporated into any predictive maintenance program.

All equipments and systems in the plant should be visually inspected onto regular basis.

The additional information provided by visual inspection will augment the predictive maintenance program regardless of the primary techniques used.

In the previous SpectraPro versions, the process parameters and also additional measurements (bearing temperature, motor current, pressure, and flow a.s.o.) can be transferred into the SpectraPro machine database using the *Transfer -> Manual Entry Point*.

For a large numbers of parameters, this task is time consuming.

A better way to do this was implemented in the latest version of the SpectraPro software.

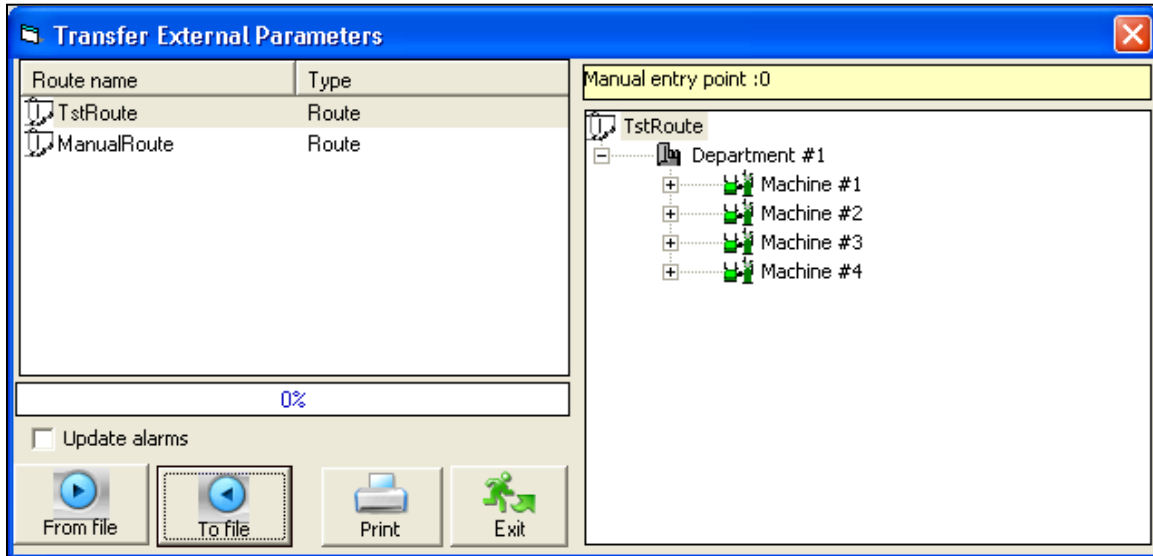
Two new commands are now available in the *Transfer* menu:

- External parameters -> To file
- External parameters -> From file

2.1 Transfer External parameters to file

Any defined route, containing Manual Entry points can be transferred now into a text file having an **.mpr** extension. The file will contain only the Manual Entry points and it will allow the user to complete manually the new parameters collected, editing this file with the NotePad. The user comments can also be added at the end of the line, but only for the first point in the Machine three.

*The Manual Entry Route transfer file can also be edited with the external software provided: **ManualRouteViewer.exe**. This application can be found into the SpectraPro directory. More details regarding this program can be found at the end of this paper.*



To transfer the Manual Entry points into a transfer file (with .mpr extension), just select the route and press **To file** button.

You can also print the contents of the transfer file and use the printed copy to complete the measurement during of the normal vibration route measurements.

The contents of the printed copy looks like this:

MANUAL POINTS LIST

Database : ManualEntry
Route : ManualRoute
Total Records : 6

Date(YYYY/MM/YY): ____/____/____
Time(HH:MM:SS): ____:____:____

Record: 0001
Department #1\Machine #1\Bearing #1 Temperature

Unit	Actual measurement	Unit
30.00		°C

User comments for machine: Machine #1

Record: 0002
Department #1\Machine #1\Bearing #2 Temperature

Unit	Actual measurement	Unit
42.00		°C

The user needs to complete the *date and time* and the *value* of the current measurements.

Optionally, comments might be added. The comments will be transferred into the SpectraPro Machine NotePad.

The Manual Route Transfer file can also be edited with the Windows NotePad, but this action must be carefully done.

Below is shown the first part of a Manual Route Transfer file opened with the NotePad (only the file Header and first record from the file is shown):

```
[Header]
FileType = MPR
DatabaseID = 82
DataBaseName = DemoPro
RouteID = 3
RouteName = ManualRoute
Records = 2
*-----
* Date format: yyyy/mm/dd
Date = 2011/8/9
*-----
* Time format: hh:mm:ss
Time = 8:22
*-----

[Record0001]
*=====
PointID = 137
Plant = Department #1
Machine = Machine #1
Point = Manual
Unit = °C
LastValue = 45
*-----
* Fill the measurement result
ActualValue = 48
*-----

*-----
* User comments for machine: Machine #1
UserComments = Some user notes
*-----
```

Only highlighted fields must be manually edited.

User comments must be typed onto a single line.

2.2 Transfer External parameters from file

Any Manual Entry Route transfer file can be transferred back into the database.

All the new measurements (if they exist) and also the user comments will be added to the active database, exactly in the same way as the normal vibration measurement.

Using the above described procedure, the time to add in the database more useful information is considerably reduced. The wrong entries will also be avoided.

The consistency of the data will be checked and if there is any mistake, the measurements won't be transferred. A transfer report will inform the user about the number of transferred measurements.

3 Establishing the Base Line

The Base Line or the measurement signature represents the measurement performed on a new machine or after repair.

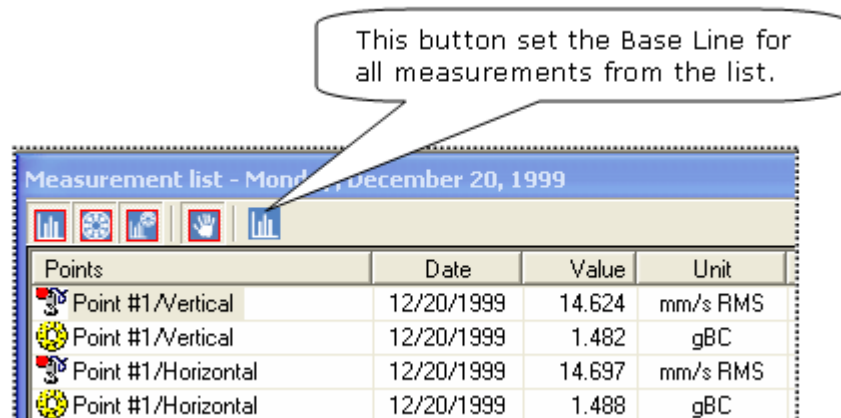
Any measurement, including the manually collected points, can be declared as Base Line in DataBase Edit Windows.

A measurement can be declared as Base Line by double-clicking the considered item. Because this procedure should be done for each measurement, this way to declare the baseline is time consuming.

It is recommended to declare the Base Line for the entire data set collected on a certain date. Thus, the comparison of the current value with the baseline becomes more useful.

Starting with the new version of SpectraPro, the baseline can be established for any set of measurements in ListView Windows.

Below is partially displayed in the ListView:



The measurement date can be selected from the right panel.

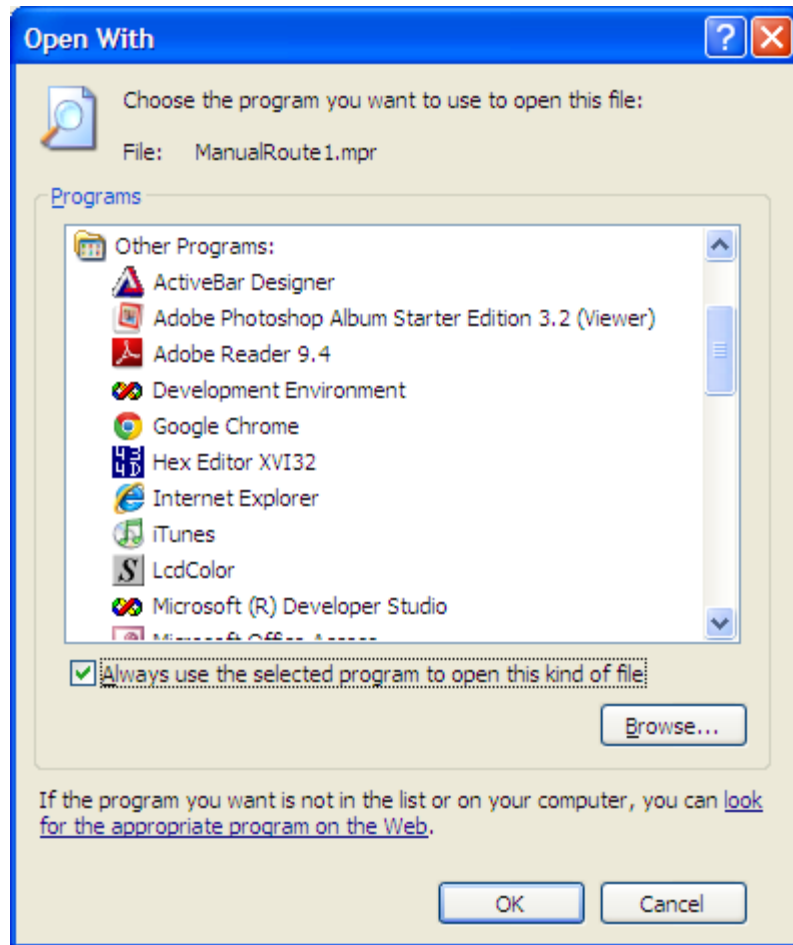
All the older Base Lines will be deleted and a new set of measurements will be settled to be Base Line.

In any Trend, the Base Line appears with a triangle mark below.

4 Open Manual Route files with a click

You can "teach" the Windows Operating system to open the Manual Route Transfer file directly by double-clicking on the file name in Windows Explorer.

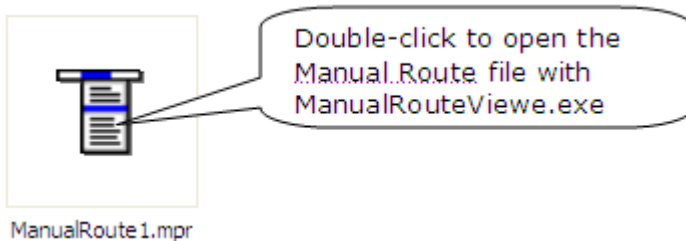
Locate any .mpr file and click-right. Select the option *Open with ->Choose program*.



Press *Browse* and locate the *ManualRouteViewer.exe* application, under the SpectraPro directory (Default path is: *C:\Program Files\SpectraPro*).

Don't forget to check the "Always use the selected program to open this kind of file" check box.

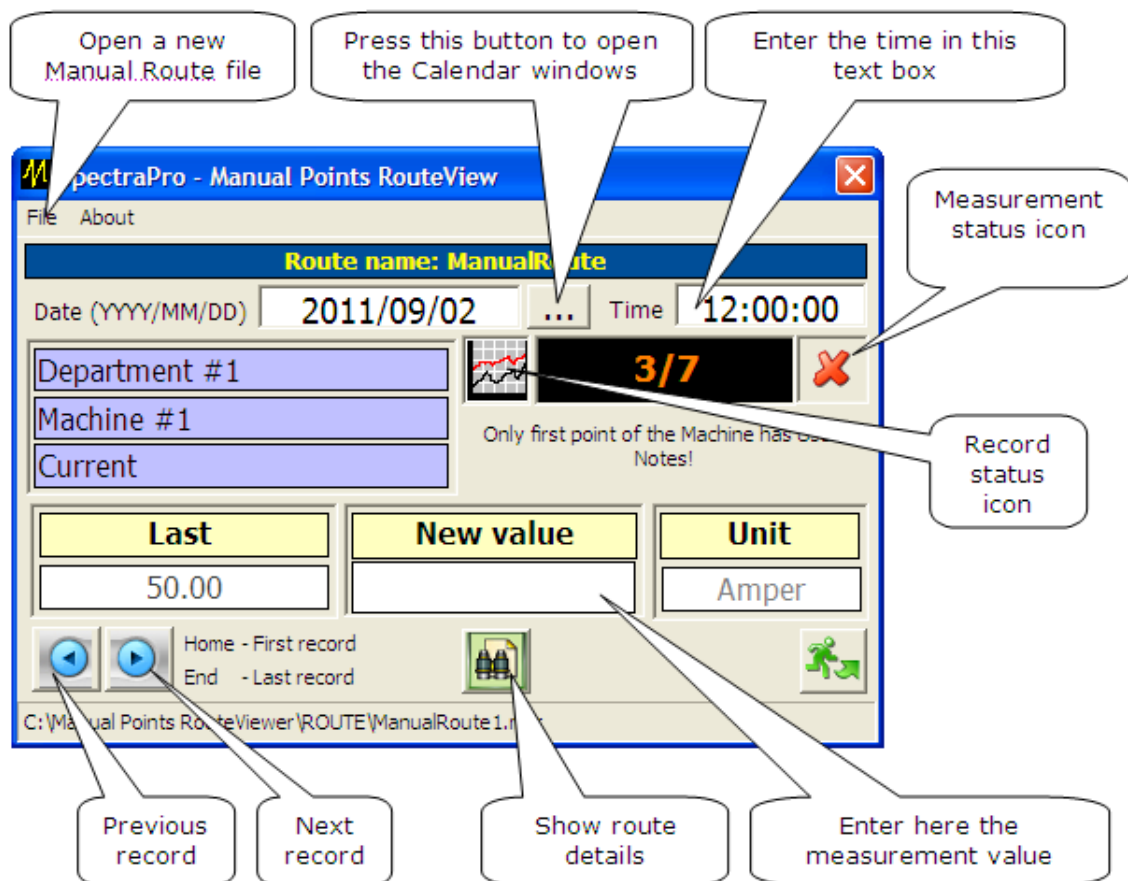
From now on, if double-click on any **.mpr** file, the *ManualRouteViewer.exe* will also be opened together with the selected file.



5 ManualRouteViewer Application

ManualRouteViewer application is a simple application provided together with any SpectraPro software.

You may use this program to open a Manual Route and to add Manual Entry measurement in the route.



The new measurement value must be entered with a dot or comma as decimal number separator, depending of your *Regional settings*.

The Record status icon might be:



Record status: Bad or corrupted, cannot be transferred into the Database.



Record status: Wrong record, but the measurement can be transferred into your Database.



Record status is OK.

Documentation Feedback

Any suggestions and comments for improving this Application Notes should be e-mailed at support@vmiab.com

VMI AB Sweden uses feedback to continuously improve our documentation and for the next VMI AB products. We request the comments to be specific and to include product name and it's version. We cannot provide personal responses to every message received, but please be assured that all feedback will be given careful consideration for future improvements to the VMI AB documentation or software.

Technical Support

Contact Details

For any problem regarding this application, do not hesitate to contact our support team at: support@vmiab.com

To know more about us, visit the following website:

<http://www.vmiab.com>